

Cynomolgus MSLN/Mesothelin Protein

Cat. No. MSL-CM280

Description

Source	Recombinant Cynomolgus MSLN/Mesothelin Protein is expressed from HEK293 with hFc tag at the C-terminus. It contains Asp306-Gly590.
Accession	XP_065393170.1
Molecular Weight	The protein has a predicted MW of 58.6 kDa. Due to glycosylation, the protein migrates to 70-80 kDa based on Bis-Tris PAGE result.
Endotoxin	Less than 1EU per µg by the LAL method.
Purity	> 95% as determined by Bis-Tris PAGE > 95% as determined by HPLC

Formulation and Storage

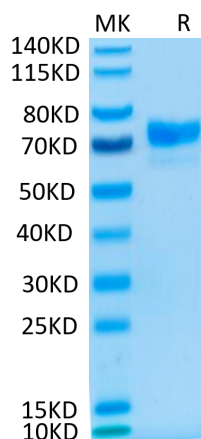
Formulation	Lyophilized from 0.22µm filtered solution in PBS (pH 7.4). Normally 8% trehalose is added as protectant before lyophilization.
Reconstitution	Centrifuge the tube before opening. Reconstituting to a concentration more than 100 µg/ml is recommended. Dissolve the lyophilized protein in distilled water.
Storage	-20 to -80°C for 12 months as supplied from date of receipt. -80°C for 3 months after reconstitution. Recommend to aliquot the protein into smaller quantities for optimal storage. Please minimize freeze-thaw cycles.

Background

Mesothelin, also known as MSLN, is a protein that in humans is encoded by the MSLN gene. Cloning studies showed that the mesothelin gene encodes a precursor protein that is processed to yield mesothelin which is attached to the cell membrane by a glycosphosphatidylinositol linkage and a 31-kDa shed fragment named megakaryocyte-potentiating factor (MPF). Although it has been proposed that mesothelin may be involved in cell adhesion, its biological function is not known. A knockout mouse line that lacks mesothelin reproduces and develops normally.

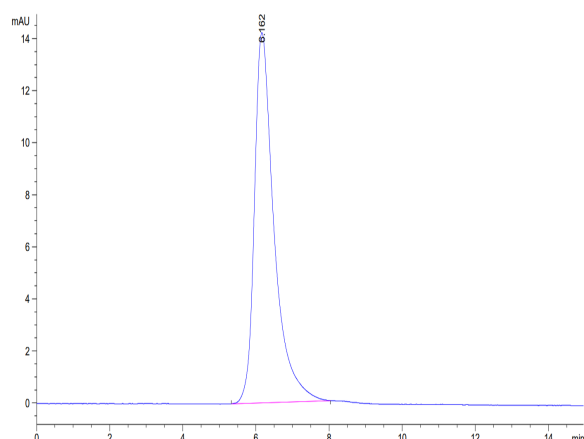
Assay Data

Bis-Tris PAGE



Cynomolgus MSLN on Bis-Tris PAGE under reduced condition. The purity is greater than 95%.

SEC-HPLC



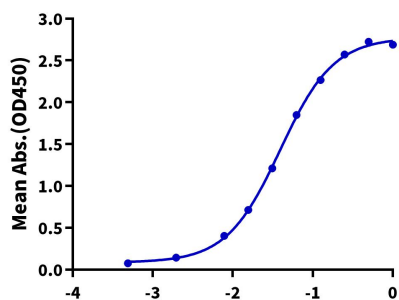
The purity of Cynomolgus MSLN is greater than 95% as determined by SEC-HPLC.

Assay Data

ELISA Data

Cynomolgus MSLN, hFc Tag ELISA

0.1µg Cynomolgus MSLN, hFc Tag Per Well



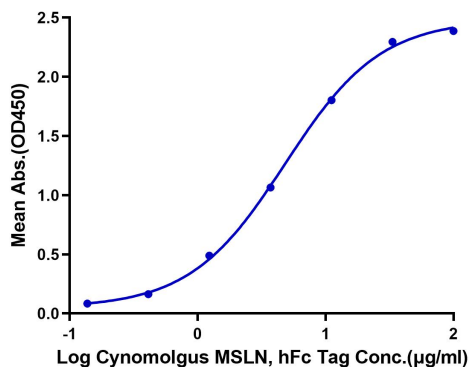
Immobilized Cynomolgus MSLN, hFc Tag at 1µg/ml (100µl/Well) on the plate. Dose response curve for Biotinylated Anti-MSLN Antibody, hFc Tag with the EC50 of 39.0ng/ml determined by ELISA (QC Test).

Log Biotinylated Anti-MSLN Antibody, hFc Tag Conc.(µg/ml)

ELISA Data

Cynomolgus MSLN, hFc Tag ELISA

0.5µg Human CA125, His Tag Per Well



Immobilized Human CA125, His Tag at 5ug/ml (100µl/Well). Dose response curve for Cynomolgus MSLN, hFc Tag with the EC50 of 4.8µg/ml determined by ELISA.